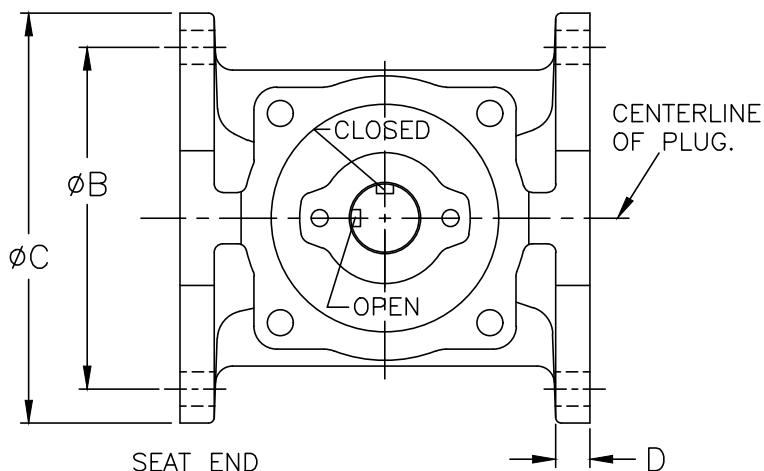
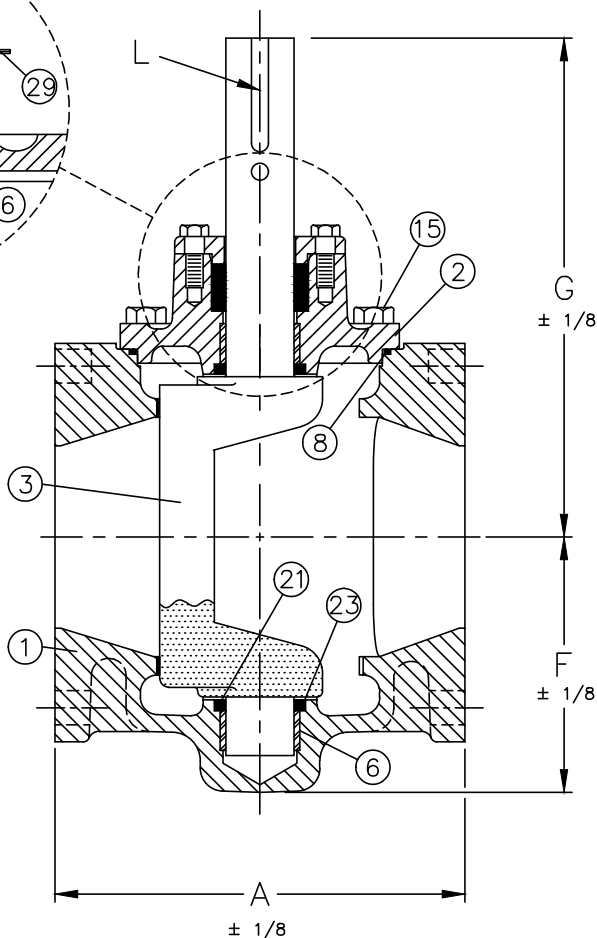
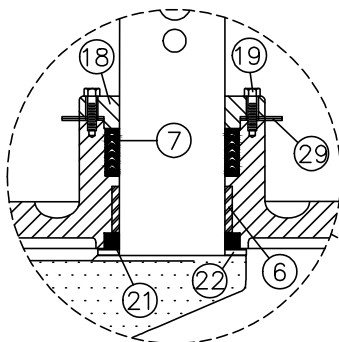
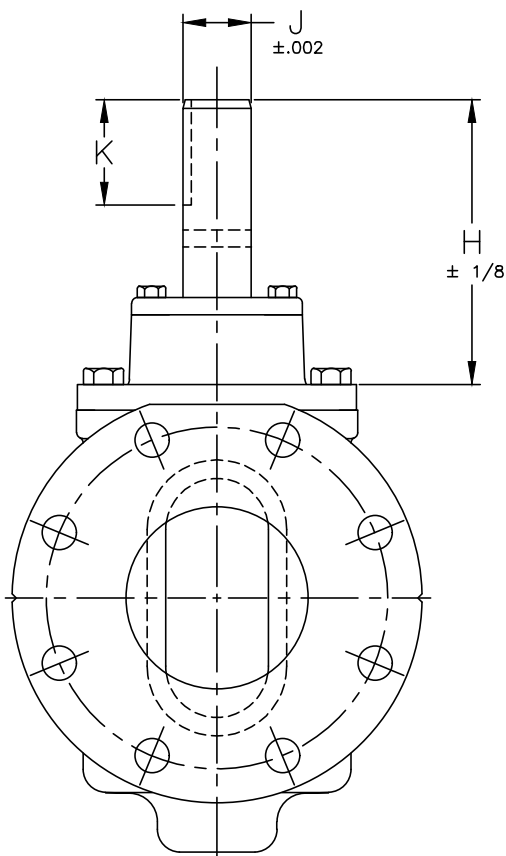


ACTUATOR MOUNTING DIMENSIONS



SEAT END



COLD WORKING PRESSURE
175 P.S.I.
HYDRO TEST PRESSURE
265 P.S.I.

SEE DRAWING NO. VM-5804R-M FOR STANDARD MATERIAL OF CONSTRUCTION. END FLANGE DRILLING CONFORMS TO ANSI B16.1

Revised 10-4-19

VALVE SIZE	A	B	C	D	E Qty	E Top	E Deep	F	G	H	J	K	L	M	N	O	P	Q	BOLT SIZE	NO. OF BOLTS	% OF STD. WT. PIPE
2	7.50	4.75	6.00	0.69	4	5/8 -11	Thru	4.50	9.62	6.00	1.246	2.31	1/4 SQ.	1.112	7.38	6.18	3.50	1/2 -13	5/8	4	100
2 1/2	7.50	5.50	7.00	0.69	4	5/8 -11	Thru	4.50	9.62	6.00	1.246	2.31	1/4 SQ.	1.112	7.38	6.18	3.50	1/2 -13	5/8	4	150
3	8.00	6.00	7.50	0.75	2	5/8 -11	Thru	4.50	9.62	6.00	1.246	2.31	1/4 SQ.	1.112	7.38	6.18	3.50	1/2 -13	5/8	4	100
4	9.00	7.50	9.00	0.75	0	—	—	5.56	10.94	6.25	1.496	2.31	3/8 SQ.	1.289	7.72	6.50	3.75	1/2 -13	5/8	8	100

ANSI CLASS 125 FLG CAM-CENTRIC® RECTANGULAR PLUG VALVE WITH BARE STEM

DATE 5-9-02



VALVE AND MANUFACTURING CORP.

DRWG. NO.

VMC-5825R